



The go-to source for accurate and complete, fully researched data in your market at an affordable price.

Catylist Research

An essential tool for brokers, appraisers, owners, institutional partners, investors and developers, this commercial real estate technology combines an up-to-date, verified database of sale/lease availabilities and comparables with comprehensive information about each commercial property in your market. It tracks market trends and provides quarterly analytics, including a customizable suite of client-ready reporting options.

A Fully Researched CRE Database



Verified using multiple sources

All data is proactively collected and verified with at least one other source.



Backed by a team of professionals

Our well-qualified professional researchers ensure accuracy and reliability.



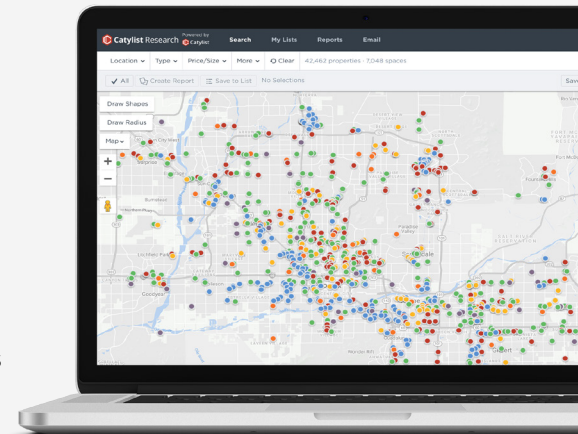
Comprehensive

Catylist Research tracks all commercial property types of any size.

A Suite of Commercial Data at Your Fingertips

Integrated with Google Earth, this property-centric technology captures every commercial property in a market, no matter the type or size.

- Sale Comparables
- Lease Transactions
- Retail Tenant Locations
- Rent Trends
- Property Surveys
- Ownership Information
- Lease Rates
- Block-Level Demographics



Features

- Integrated with Google Earth and Excel
- Map-based search with pan and zoom filtering
- Property-centric display including parcel data
- Detailed property data on every commercial property (all types, all sizes)
- Mobile-responsive interface
- Broadcast email marketing
- Lead generation dashboard
- Client-ready PDF reports for any property:
 - Detailed property brochures
 - Demographics — block-level data
 - Retail logos
 - Aerial imagery with parcel outline
 - Google Earth (KML)
 - Company-branded
- Geospatial site selection packages
- Market share/top performer/leasing information guide



Need information on a property that's not currently in the system? Our research team is standing by to assist through our *Research on Demand* feature.

A Nationwide Network Searching for your Listings



Connecting CRE Professionals

The Catylist Member Network spans across the U.S. and Canada. Over 318,000 unique users monthly rely on Catylist-powered CRE technology to find opportunities, connecting markets regionally and nationally.



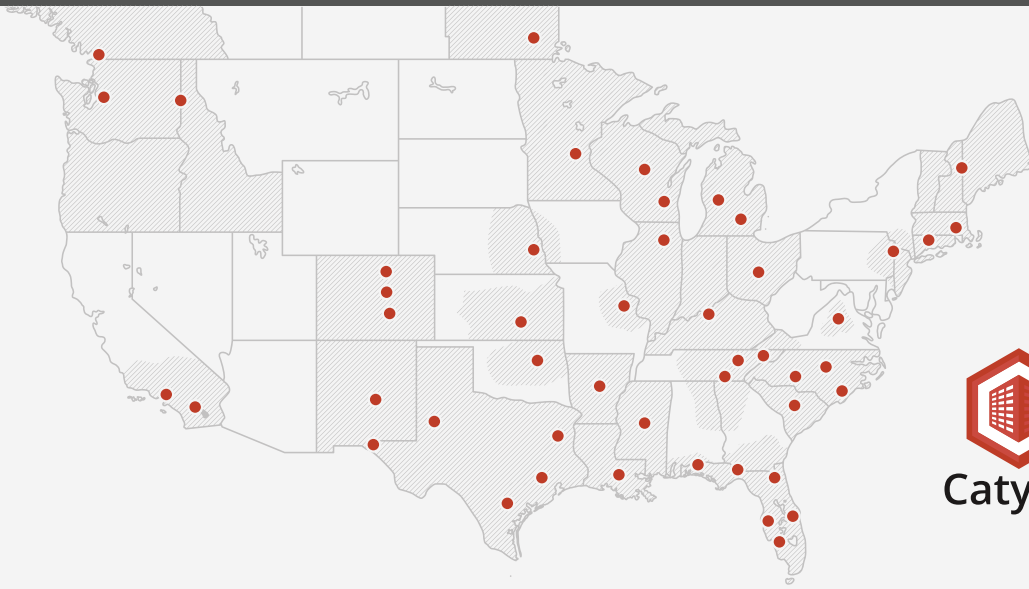
National Exposure

Through our public-facing commercial real estate search engine Commercial Exchange, we promote your listings to a national market, catapulting your local listings to exponentially more leads.



50+ Local Markets

Catylist has built customized local market technology solutions for more than 50 markets, from metropolitan areas to multi-state regions across North America.



Catylist

Ask us about Catylist Research in your market.

For more info, contact our sales team today.



Steve Golin
SVP, Research Sales

303.476.1055

sgolin@catylist.com



Catylist.com